



How to integrate repeating sections from NINTEX Forms

dox42

Documentation

HOW TO INTEGRATE REPEATING SECTIONS FROM NINTEX FORMS

As a sample for the integration we will generate a birthday invitation list from SharePoint. The list consists of the “group name” and the repeating section “members” where a group can have multiple members. Please be sure to connect the repeating section to a field of the type “multiple lines of text” and provide meaningful names for the controls within the repeating section.

The NINTEX Form in this sample looks as follows:

To integrate the repeating section from NINTEX Forms into dox42 please do the following:

1. Configure the SharePoint data source and select the list that contains the data.

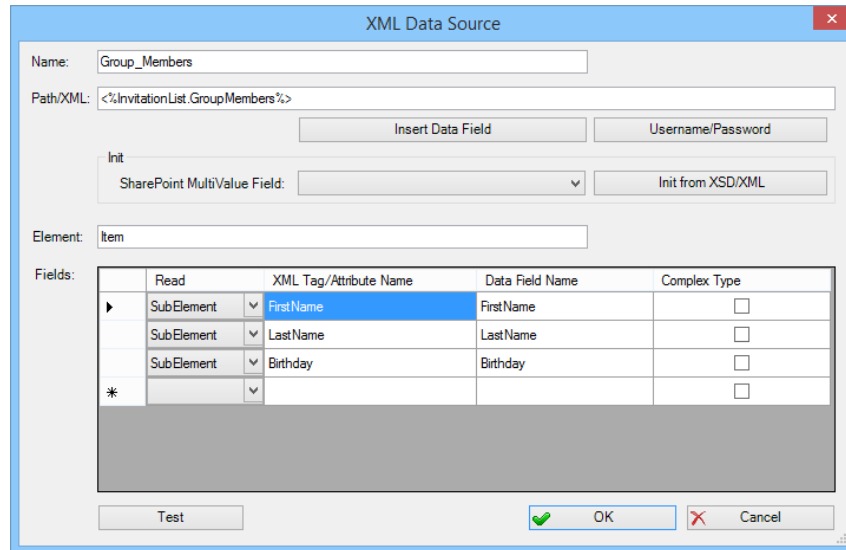
2. When clicking on “Test” in the SharePoint data source the fields for the sample look as follows.

Group	GroupMembers	NirtexLiv
Sports Club	<?xml version="1.0" encoding="utf-8"?><RepeaterData><Version /><Items><Item><FirstName type="System.String">Brad</FirstN...	
The Millers	<?xml version="1.0" encoding="utf-8"?><RepeaterData><Version /><Items><Item><FirstName type="System.String">Steve</First...	

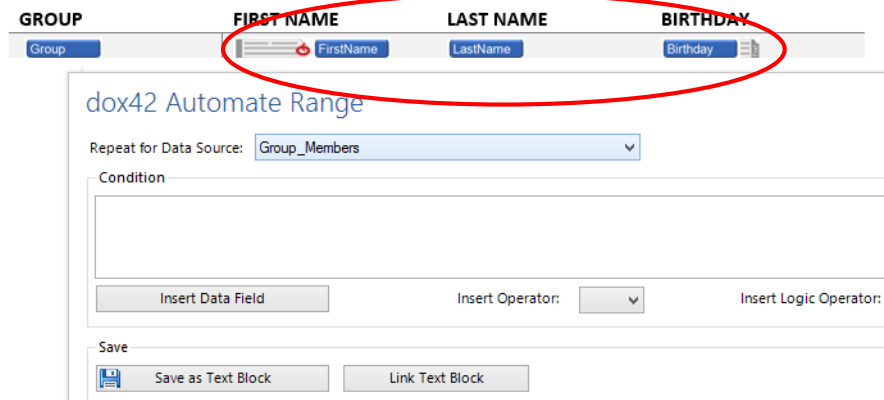
The repeating section from NINTEX Forms is received as XML code in the field “GroupMembers”.

```
<?xml version="1.0" encoding="utf-8"?>
<RepeaterData>
  <Version />
  <Items>
    <Item>
      <FirstName type="System.String">Brad</FirstName>
      <LastName type="System.String">Football</LastName>
      <Birthday type="System.DateTime">05/14/1975 00:00:00</Birthday>
    </Item>
    <Item>
      <FirstName type="System.String">Theodor</FirstName>
      <LastName type="System.String">Soccer</LastName>
      <Birthday type="System.DateTime">10/17/1974 00:00:00</Birthday>
    </Item>
    <Item>
      <FirstName type="System.String">Shawn</FirstName>
      <LastName type="System.String">Curling</LastName>
      <Birthday type="System.DateTime">03/10/1977 00:00:00</Birthday>
    </Item>
  </Items>
</RepeaterData>
```

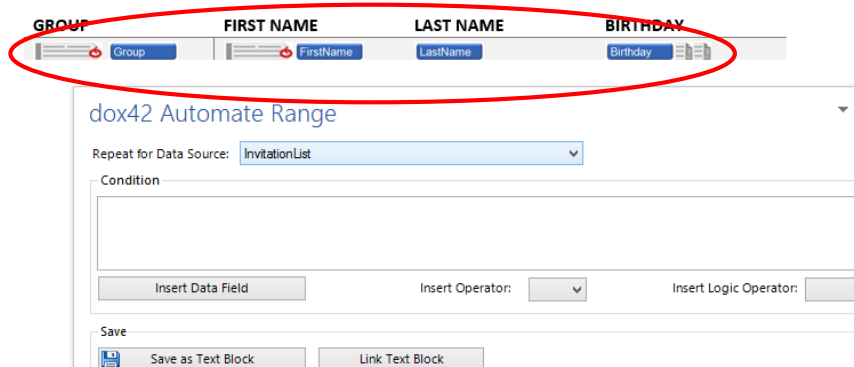
3. The XML data source for the NINTEX Forms repeating section will be configured in the next step. Start with inserting the data field from the SharePoint data source into the Path/XML field. In the sample it is <%InvitationList.GroupMembers%>. As you can see in the XML code above the element containing the data is “Item”. Manually type in your Subelements - in the sample they are: FirstName, LastName and Birthday. You could also copy/paste the XML from the Test-Form in the SharePoint data source, save it and select the saved XML from the “Init from XML/XSD” dialog of the XML data source to configure your XML data source. Take care, the mapping of the XML elements is case-sensitive.



- The mapping is now completed. Insert the data fields into a table your document.
- In that table there will be two automated ranges: one is for the multiple list entries in SharePoint (=groups) and one is for the multiple entries in the NINTEX Forms repeating section (=members of the group). First, create the automated range for the NINTEX Forms repeating section fields from the XML data source. To include all entries select the XML data source in “Repeat for Data Source”.



- Secondly, create the automated range for the SharePoint data source and select it as “Repeat for Data Source”.



7. After generating the document the table looks as follows:

Birthday Party Invitation List from SharePoint and NINTEX Forms

GROUP	FIRST NAME	LAST NAME	BIRTHDAY
SPORTS CLUB	Brad	Football	05/14/1975
SPORTS CLUB	Theodor	Soccer	10/17/1974
SPORTS CLUB	Shawn	Curling	03/10/1977
THE MILLERS	Steve	Miller	01/20/1954
THE MILLERS	Catherine	Miller	12/12/1960

DOCUMENT INFORMATION

Version: 1.0

Author: Johannes Linder

Date: April 10, 2015