



---

# dox42SAP

---

Documentation

---

Christian Bauer

---

# TABLE OF CONTENTS

Table of Contents .....	2
What is dox42SAP?.....	3
Installation for the dox42 Office Add-Ins .....	3
System Requirements .....	4
Installation of dox42SAP for dox42 Server .....	5
Data integration with dox42SAP .....	6
Connection to SAP .....	6
Read SAP tables .....	7
Call SAP BAPI/RFC modules .....	7
Execute SAP BW Queries .....	8
Support .....	8

## What is dox42SAP?

The dox42SAP data source enables you to use SAP-data for document automation. What is more, multiple data sources can be integrated into one document at the same time.

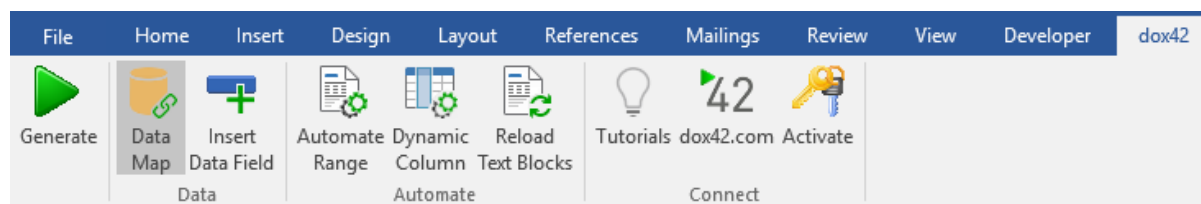
dox42SAP is a supplementary package for dox42. dox42SAP is a Custom Data Source.

A dox42 Custom Data Source enables access to specific data sources or systems, additionally to the already predefined data sources.

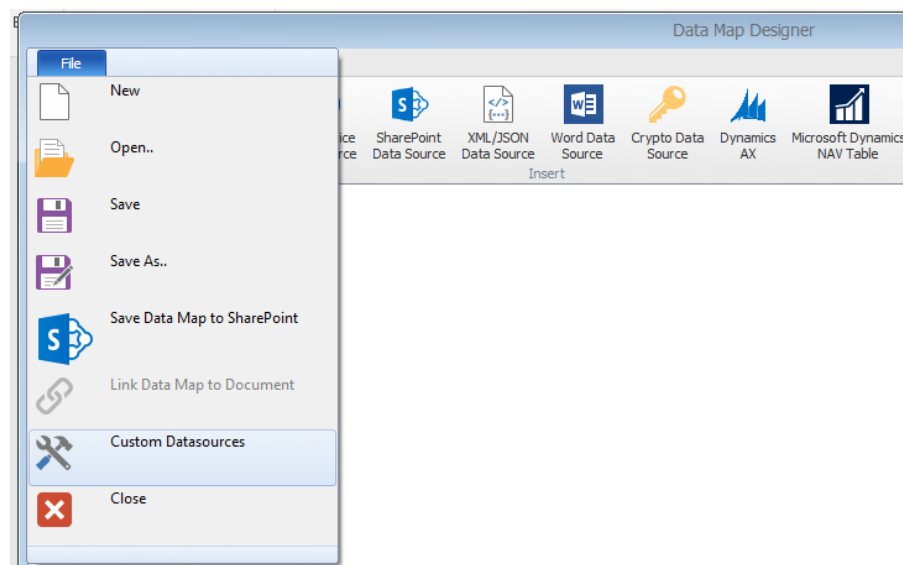
## Installation for the dox42 Office Add-Ins

Save the dox42SAP files to a fixed directory on the computer, on which you want to use dox42. To do that, just unzip the file **dox42SAP.zip**.

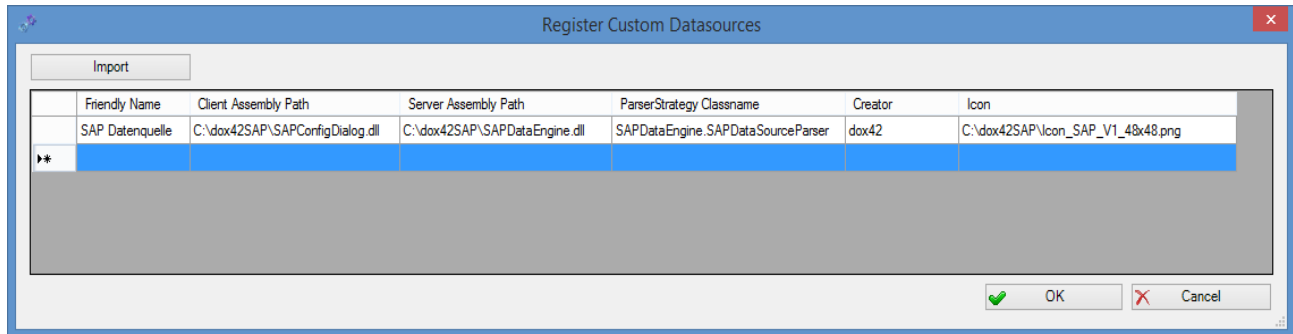
Start Word/Excel, activate the dox42-Ribbon and select „**Data Map**“.



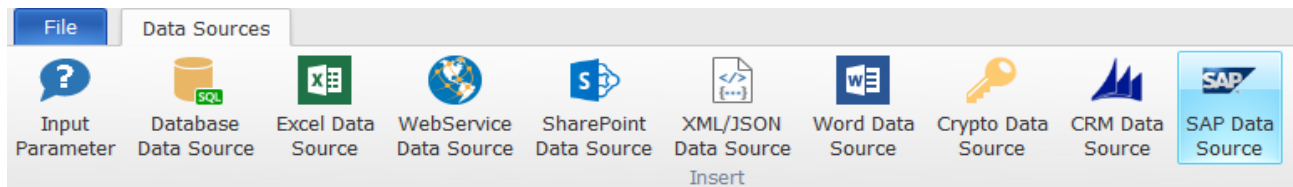
In the Data Map Designer select „**Data Map**“. Open the File-Menu and select „**Custom Datasources**“.



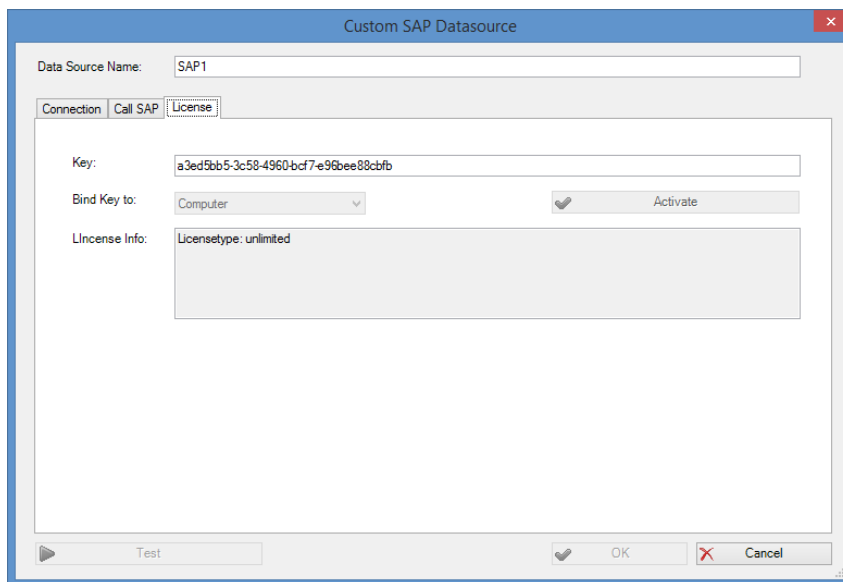
In the dialogue „**Custom Datasources**“, you can import the Import Configuration (**SAPDataSourceImport.config**). This way, the configuration will be defined in the Custom Data Source.



Now, the Custom Data Source is ready for use as any other dox42 data source.



Now you need to activate your license key. To do that, simply select your already defined SAP Data Source, open the configuration dialogue and move to the register “License”. Insert your license key here and click “Activate”.



## System Requirements

- ✓ Activated dox42 Word or Excel Add-In
- ✓ dox42SAP uses ERP-Connect from Theobald Software. Please find the requirements of ERPConnect here: <http://help.theobald-software.com/ERPConnect-EN/default.aspx?pageid=prerequisites>
- ✓ Visual Studio doesn't need to be installed to use dox42SAP. In case SAP GUI is not installed, however, you need to copy the file Library **Librfc32.dll** to your system. This Library can be downloaded from Theobald-Software: <http://help.theobald-software.com/ERPConnect-EN/default.aspx?pageid=64-bit-environment>

## Installation of dox42SAP for dox42 Server

In order to use the Custom SAP Data Source on the dox42 Server, please copy the following Assemblies in the /Bin directory of your Server:

- ✓ SAPDataEngine.dll
- ✓ dox42SAPLicence.dll
- ✓ ERPConnect40.dll

Now the Custom SAP Data Source has to be registered in the **web.config** of your server.

```
<customDataSources>  
  
  <add key="SAPDataEngine.SAPDataSourceParser"  
    value="SAP Data Source;c:\dox42Server\bin\SAPDataEngine.dll;"/>  
  
</customDataSources>
```

Furthermore, please insert the license key in the **web.config**:

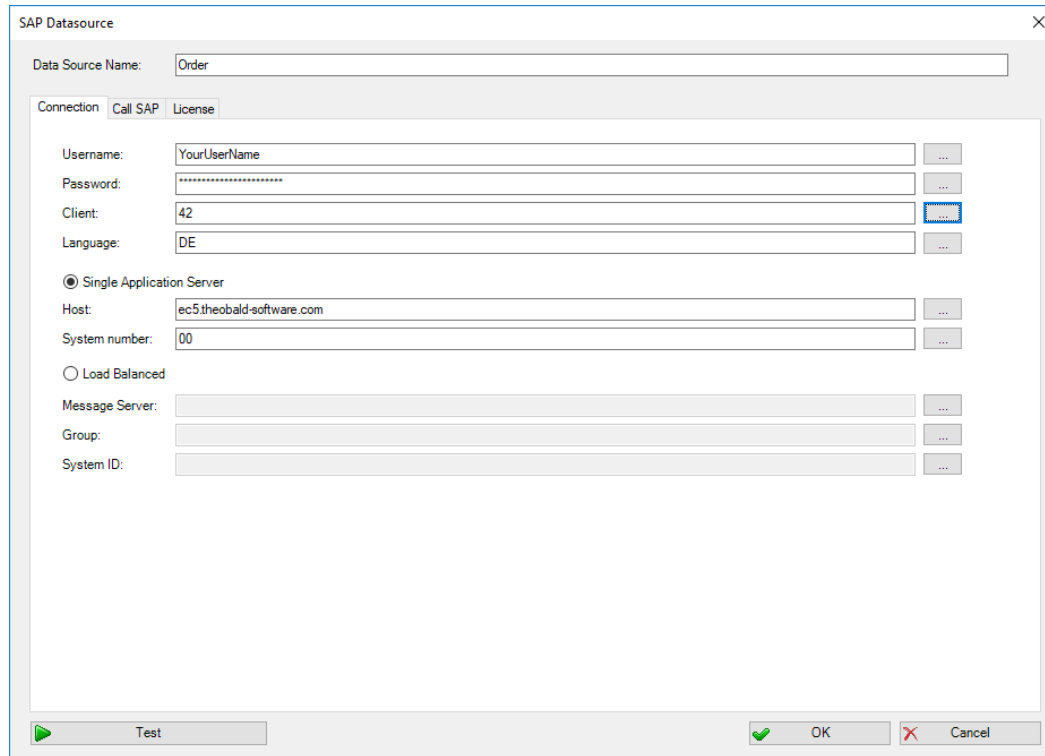
```
<appSettings>  
  
  <add key="LicenseFilePath" value="c:\dox42Server\License" />  
  
  <add key="LicenseKey" value="..." />  
  
  <add key="dox42SAPLicenseKey" value="..." />  
  
  <add key="MailServer" value="smtp.1und1.de" />  
  
  <add key="dox42ServerMail" value="mydox42server@dox42.com" />  
  
  <add key="MailServerPassWord" value="..." />  
  
  <add key="SendErrorsToMail" value="mymonitoring@dox42.com" />  
  
  <add key="Certificate" value="c:\ dox42Server\Certs\Certificate.pfx" />  
  
  <add key="CertificatePassWord" value="..." />  
  
  <add key="CheckServiceHeader" value="true" />  
  
  <add key="UserPermissionODBCConnectionString"  
    value="Driver={SQL Server Native Client 10.0};Server=...;Database=...;Uid=...;Pwd=...;" />  
  
  <add key="CheckUserPermissionSQL"  
    value="SELECT COUNT(*) FROM Users where Username =  
    '%username%' and Password = '%password%'" />  
  
  <add key="ThrowExceptionOnError" value="false" />  
  
</appSettings>
```

Also have a look at the dox42 Server Documentation: [www.dox42.com/dox42Server.aspx](http://www.dox42.com/dox42Server.aspx).

## Data integration with dox42SAP

### Connection to SAP

Configure the connection to SAP in the register **“Connection”**. You can define data fields of another data source for every value. This way, you could transfer the configuration for example in an Excel or XML file:



The screenshot shows the 'SAP Datasource' configuration window. At the top, the 'Data Source Name' is set to 'Order'. Below this, there are three tabs: 'Connection', 'Call SAP', and 'License'. The 'Connection' tab is active. It contains several input fields with dropdown menus:

- Username: YourUserName
- Password: [masked]
- Client: 42
- Language: DE
- Single Application Server
  - Host: ec5theobald-software.com
  - System number: 00
- Load Balanced
- Message Server: [empty]
- Group: [empty]
- System ID: [empty]

At the bottom of the dialog, there is a 'Test' button with a play icon, and 'OK' and 'Cancel' buttons.

With the dox42SAP Custom SAP Data Source you can:

- ✓ Read and filter SAP tables
- ✓ Read data from SAP BAPI/RFC modules
- ✓ Execute SAP BW Queries (since version 4.1)

## Read SAP tables

SAP Datasource

Data Source Name:

Connection: **Call SAP** License

Read:

Import Parameters/Structures **Open SQL Where Clause**

`VBELN = '<%OrderNo%>'`

Max Rows:

Return:   Convert Date/Time

SAP Column Name
VBELN
ERDAT
ERZET
ERNAM
KUNNR
AUGRU
...

## Call SAP BAPI/RFC modules

SAP Datasource

Data Source Name:

Connection: **Call SAP** License

Read:

Import Parameters/Structures **Open SQL Where Clause**

Param Name	Value	Data Field
DESTINATION_FROM_AIRPORTID	<%From%>	<input type="text"/>
DESTINATION_TO_AIRPORTID	<%To%>	<input type="text"/>
*		<input type="text"/>

Return:    Convert Date/Time

SAP Column Name
KUNNR
LAND1
NAME1
NAME2
ORT01
PSTLZ
REGIO
STRAS

Define structure in your Input Parameters with:

Structurename.Parametername

### Execute SAP BW Queries

**SAP Datasource**

Data Source Name:

Connection:  Call SAP  License

Read:

Variables  Open SQL Where Clause

	Variable	Value	Data Field
▶	MAT04	<%Material%>	<input type="text"/>
*			<input type="text"/>

Return:   Convert Date/Time

	SAP Column Name	Dimension/Measure
	OD_SOLD_TO	Dimension ▾
	OD_CO_CODE	Dimension ▾
	OD_MATERIAL	Dimension ▾
	Cost	Measure ▾
▶	Value	Measure ▾
*		▾

### Support

Should you have any questions, please do not hesitate to contact [support@dox42.com](mailto:support@dox42.com). We are happy to help you!

**Good luck with dox42!**

Your dox42 Team