



dox42SAP

Documentation

Christian Bauer

TABLE OF CONTENTS

Table of Contents	2
What is dox42SAP?.....	3
Installation for the dox42 Office Add-Ins	3
System Requirements	5
Installation of dox42SAP for dox42 Server	6
Data integration with dox42SAP	7
Connection to SAP	7
Read SAP tables	7
Call SAP BAPI/RFC modules	7
Support	8

What is dox42SAP?

The dox42SAP data source enables you to use SAP-data for document automation. What is more, multiple data sources can be integrated into one document at the same time.

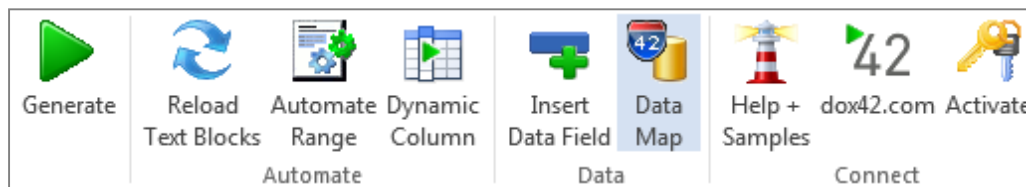
dox42SAP is a supplementary package for dox42. dox42SAP is a Custom Data Source.

A dox42 Custom Data Source enables access to specific data sources or systems, additionally to the already predefined data sources.

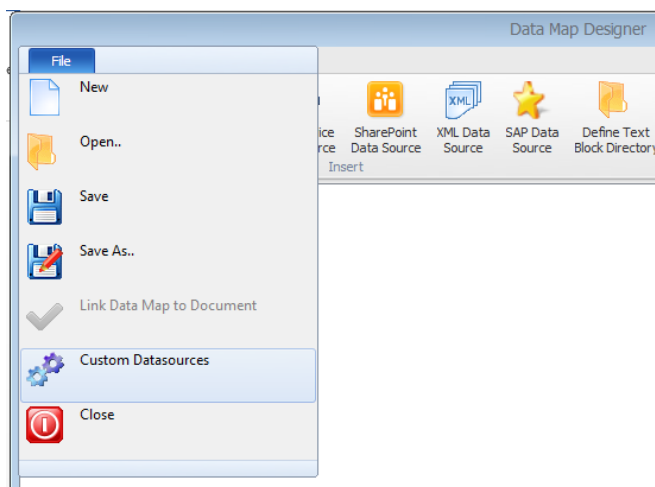
Installation for the dox42 Office Add-Ins

Save the dox42SAP files to a fixed directory on the computer, on which you want to use dox42. To do that, just unzip the file **dox42SAP.zip**.

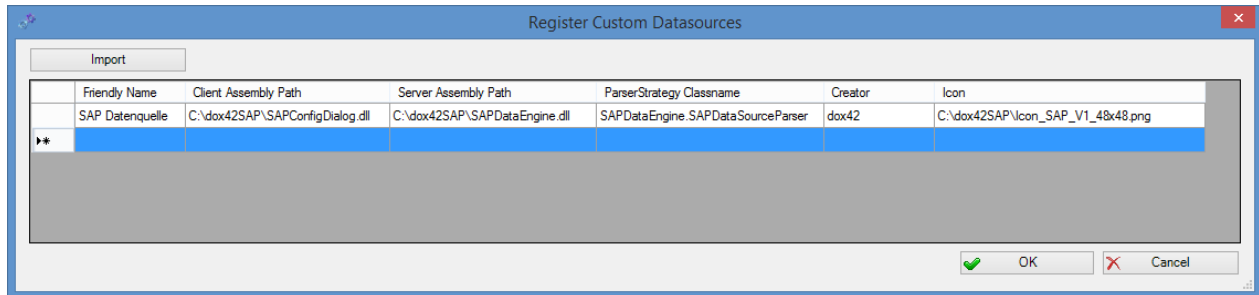
Start Word/Excel, activate the dox42-Ribbon and select „**Data Map**“.



In the Data Map Designer select „**Data Map**“. Open the File-Menu and select „**Custom Datasources**“.



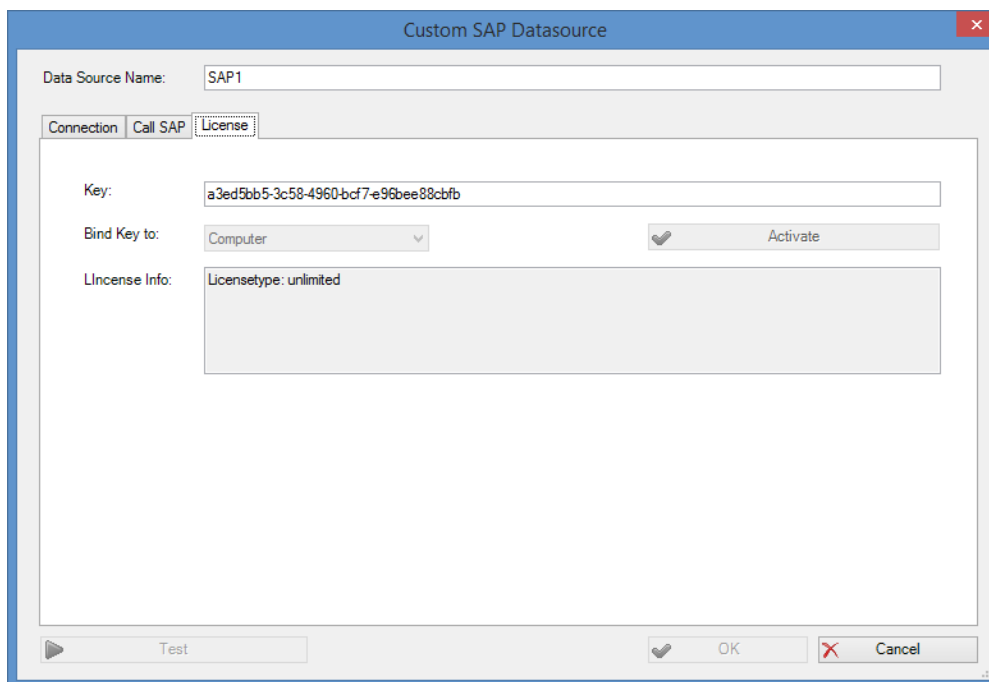
In the dialogue „**Register Custom Datasources**“, you can import the Import Configuration (**SAPDataSourceImport.config**). This way, the configuration will be defined in the Custom Data Source.



Now, the Custom Data Source is ready for use as any other dox42 data source.



Now you need to activate your license key. To do that, simply select your already defined SAP Data Source, open the configuration dialogue and move to the register “**License**”. Insert your license key here and click “**Activate**”.



System Requirements

- ✓ Activated dox42 Word or Excel Add-In
- ✓ dox42SAP uses ERP-Connect from Theobald Software. Please find the requirements of ERPConnect here:
<http://help.theobald-software.com/ERPConnect-EN/default.aspx?pageid=prerequisites>
- ✓ Visual Studio doesn't need to be installed to use dox42SAP. In case SAP GUI is not installed, however, you need to copy the file Library **Librfc32.dll** to your system. This Library can be downloaded from Theobald-Software: <http://help.theobald-software.com/ERPConnect-EN/default.aspx?pageid=64-bit-environment>

Installation of dox42SAP for dox42 Server

In order to use the Custom SAP Data Source on the dox42 Server, please copy the following Assemblies in the /Bin directory of your Server:

- ✓ SAPDataEngine.dll
- ✓ dox42SAPLicence.dll
- ✓ ERPConnect40.dll

Now the Custom SAP Data Source has to be registered in the **web.config** of your server.

```
<customDataSources>  
  
  <add key="SAPDataEngine.SAPDataSourceParser"  
    value="SAP Data Source;c:\dox42Server\bin\SAPDataEngine.dll;"/>  
  
</customDataSources>
```

Furthermore, please insert the license key in the **web.config**:

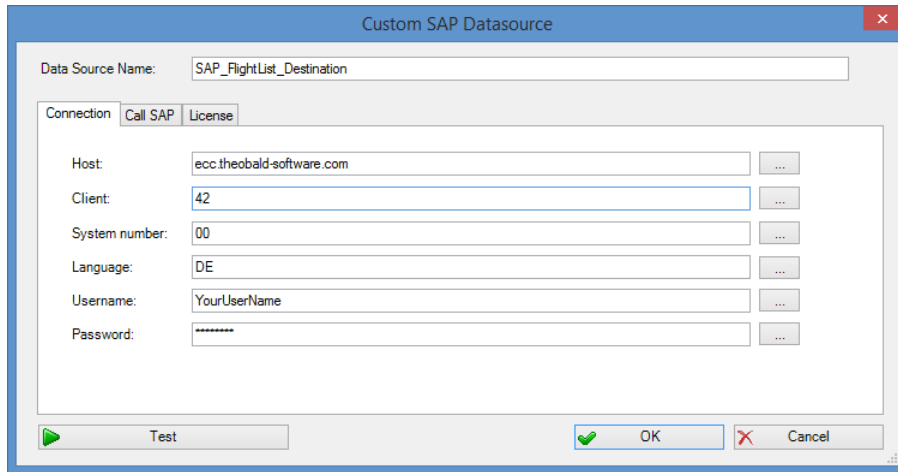
```
<appSettings>  
  
  <add key="LicenseFilePath" value="c:\dox42Server\License" />  
  
  <add key="LicenseKey" value="..." />  
  
  <add key="dox42SAPLicenseKey" value="..." />  
  
  <add key="MailServer" value="smtp.1und1.de" />  
  
  <add key="dox42ServerMail" value="mydox42server@dox42.com" />  
  
  <add key="MailServerPassWord" value="..." />  
  
  <add key="SendErrorsToMail" value="mymonitoring@dox42.com" />  
  
  <add key="Certificate" value="c:\ dox42Server\Certs\Certificate.pfx" />  
  
  <add key="CertificatePassWord" value="..." />  
  
  <add key="CheckServiceHeader" value="true" />  
  
  <add key="UserPermissionODBCConnectionString"  
    value="Driver={SQL Server Native Client 10.0};Server=...;Database=...;Uid=...;Pwd=...;" />  
  
  <add key="CheckUserPermissionSQL"  
    value="SELECT COUNT(*) FROM Users where Username =  
    '%username%' and Password = '%password%' " />  
  
  <add key="ThrowExceptionOnError" value="false" />  
  
</appSettings>
```

Also have a look at the dox42 Server Documentation: www.dox42.com/dox42Server.aspx.

Data integration with dox42SAP

Connection to SAP

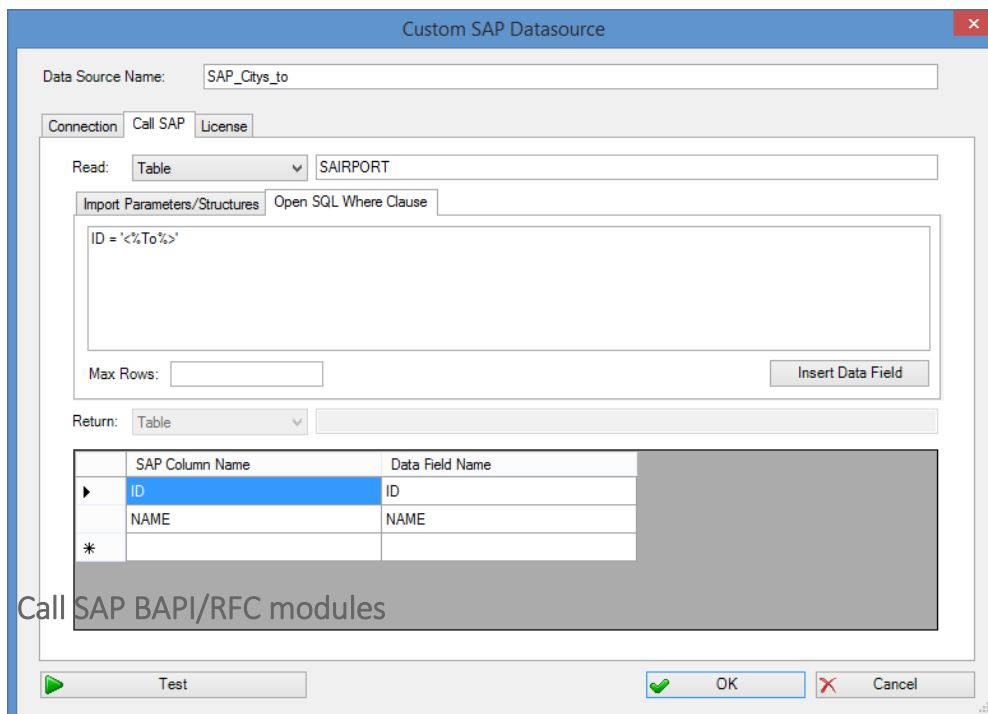
Configure the connection to SAP in the register **“Connection”**. You can define data fields of another data source for every value. This way, you could transfer the configuration for example in an Excel or XML file:



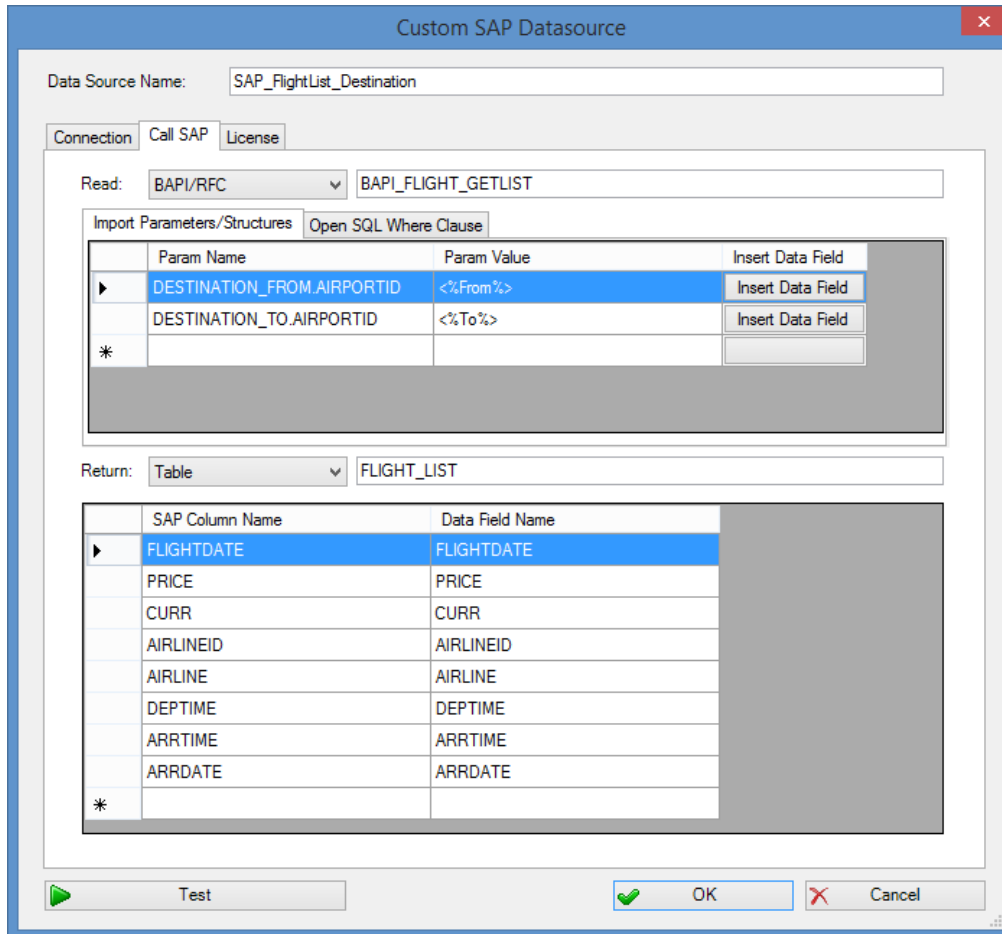
With the dox42SAP Custom SAP Data Source you can:

- ✓ Read and filter SAP tables
- ✓ Read data from SAP BAPI/RFC modules

Read SAP tables



Call SAP BAPI/RFC modules



Define structure in your Input Parameters with:

Structurename.Parametername

Support

Should you have any questions, please do not hesitate to contact support@dox42.com. We are happy to help you!

Good luck with dox42!

Your dox42 Team