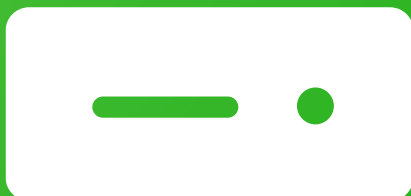


DOX42 SAP

DOCUMENTATION

Version 1.2



dox42 SAP

dox42 GmbH | Vegagasse 5/2, A-1190 Vienna
IBAN: AT571420020010936536 | BIC: BAWAATWW | Handelsgericht Wien | FN: 393153 t | UID: ATU67845433

Content

1	What is dox42SAP? _____	3
2	Installation for the dox42 Office Add-Ins _____	3
3	System Requirements _____	4
4	Installation of dox42SAP for dox42 Server _____	4
5	Data integration with dox42SAP _____	6
5.1	Connection to SAP _____	6
5.2	Read SAP tables _____	7
5.3	Call SAP BAPI/RFC modules _____	7
5.4	Execute SAP BW Queries _____	8
6	Support _____	8

1 What is dox42SAP?

The dox42SAP data source enables you to use SAP-data for document automation. What is more, multiple data sources can be integrated into one document at the same time.

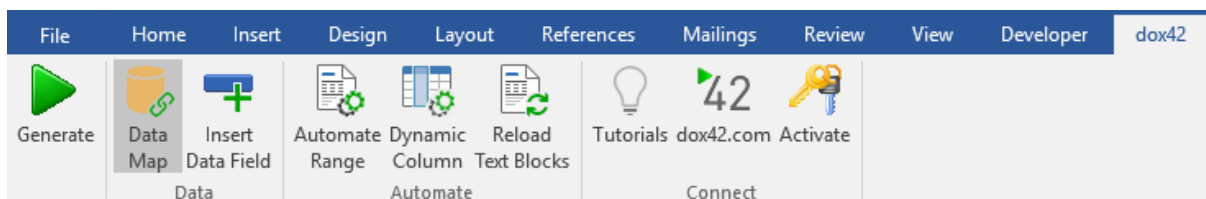
dox42SAP is a supplementary package for dox42. dox42SAP is a Custom Data Source.

A dox42 Custom Data Source enables access to specific data sources or systems, additionally to the already predefined data sources.

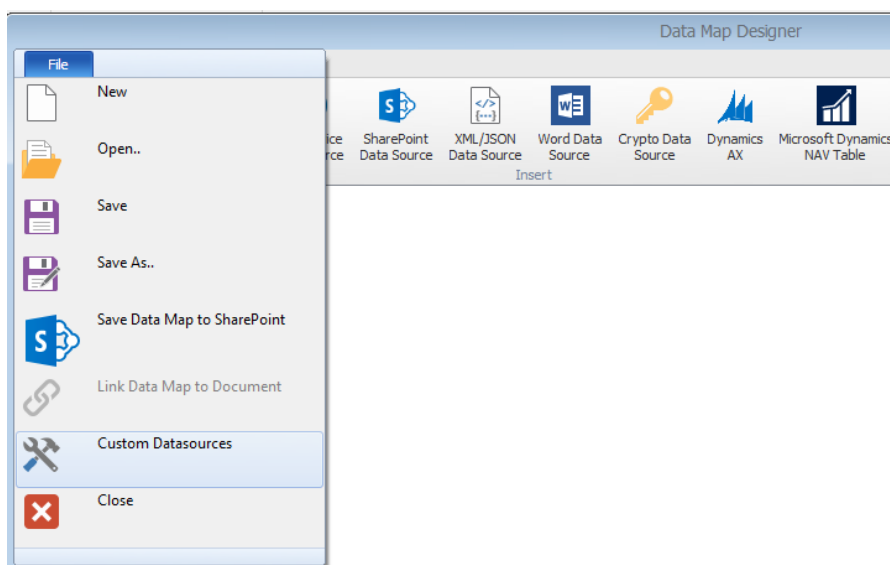
2 Installation for the dox42 Office Add-Ins

Save the dox42SAP files to a fixed directory on the computer, on which you want to use dox42. To do that, just unzip the file **dox42SAP.zip**.

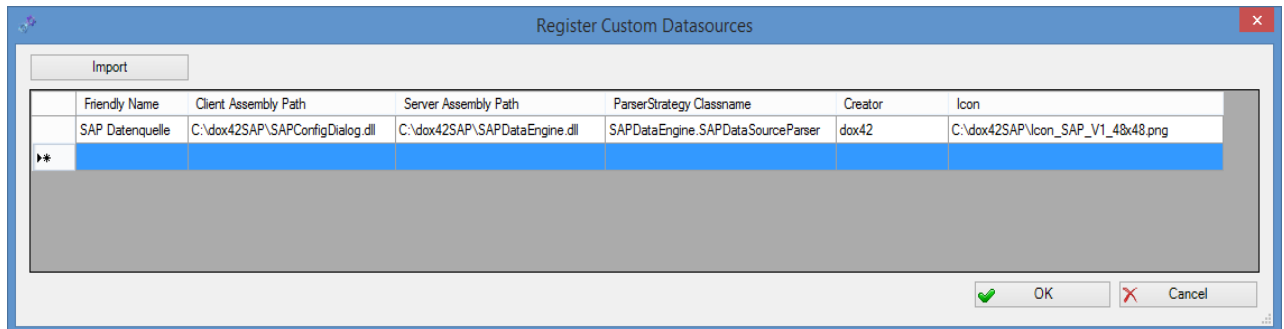
Start Word/Excel, activate the dox42-Ribbon and select „**Data Map**“.



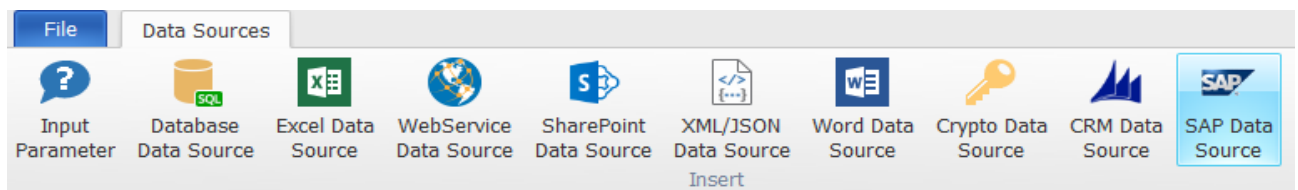
In the Data Map Designer select „**Data Map**“. Open the File-Menu and select „**Custom Datasources**“.



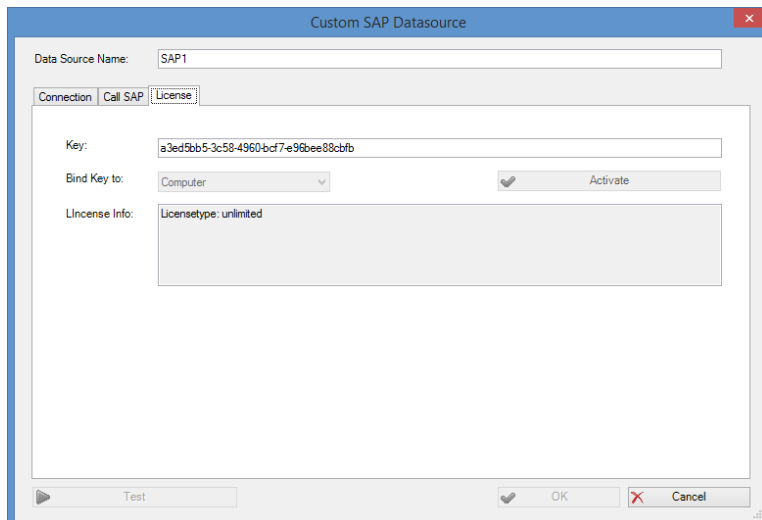
In the dialogue „**Custom Datasources**“, you can import the Import Configuration (**SAPDataSourceImport.config**). This way, the configuration will be defined in the Custom Data Source.



Now, the Custom Data Source is ready for use as any other dox42 data source.



Now you need to activate your license key. To do that, simply select your already defined SAP Data Source, open the configuration dialogue and move to the register „**License**“. Insert your license key here and click „**Activate**“.



3 System Requirements

- ✓ Activated dox42 Word or Excel Add-In
- ✓ dox42SAP uses ERP-Connect from Theobald Software. Please find the requirements of ERPConnect here: <https://help.theobald-software.com/en/erpconnect/prerequisites-and-installation/prerequisites>
- ✓ Visual Studio doesn't need to be installed to use dox42SAP. In case SAP GUI is not installed, however, you need to copy the file Library **Librfc32.dll** to your system. This Library can be downloaded from the SAP Software center: [Software Center - SAP for Me](#) Search for and download the SAP KERNEL 32-BIT or SAP KERNEL 64-BIT components.

4 Installation of dox42SAP for dox42 Server

In order to use the Custom SAP Data Source on the dox42 Server, please copy the following Assemblies in the /Bin directory of your Server:

- ✓ SAPDataEngine.dll
- ✓ dox42SAPLicence.dll
- ✓ ERPConnect40.dll

Now the Custom SAP Data Source has to be registered in the **web.config** of your server.

```
<customDataSources>
```

```
  <add key="SAPDataEngine.SAPDataSourceParser"
        value="SAP Data Source;c:\dox42Server\bin\SAPDataEngine.dll;" />
```

```
</customDataSources>
```

Furthermore, please insert the license key in the **web.config**:

```
<appSettings>
```

```
  <add key="LicenseFilePath" value="c:\dox42Server\License" />
  <add key="LicenseKey" value="..." />
  <add key="dox42SAPLicenseKey" value="..." />
  <add key="MailServer" value="smtp.1und1.de" />
  <add key="dox42ServerMail" value="mydox42server@dox42.com" />
  <add key="MailServerPassWord" value="..." />
  <add key="SendErrorsToMail" value="mymonitoring@dox42.com" />
  <add key="Certificate" value="c:\dox42Server\Certs\Certificate.pfx" />
  <add key="CertificatePassWord" value="..." />
  <add key="CheckServiceHeader" value="true" />
  <add key="UserPermissionODBCConnectionString"
        value="Driver={SQL Server Native Client 10.0};Server=...;Database=...;Uid=...;Pwd=..." />
  <add key="CheckUserPermissionSQL"
        value="SELECT COUNT(*) FROM Users where Username =
              '%username%' and Password = '%password%' " />
  <add key="ThrowExceptionOnError" value="false" />
```

```
</appSettings>
```

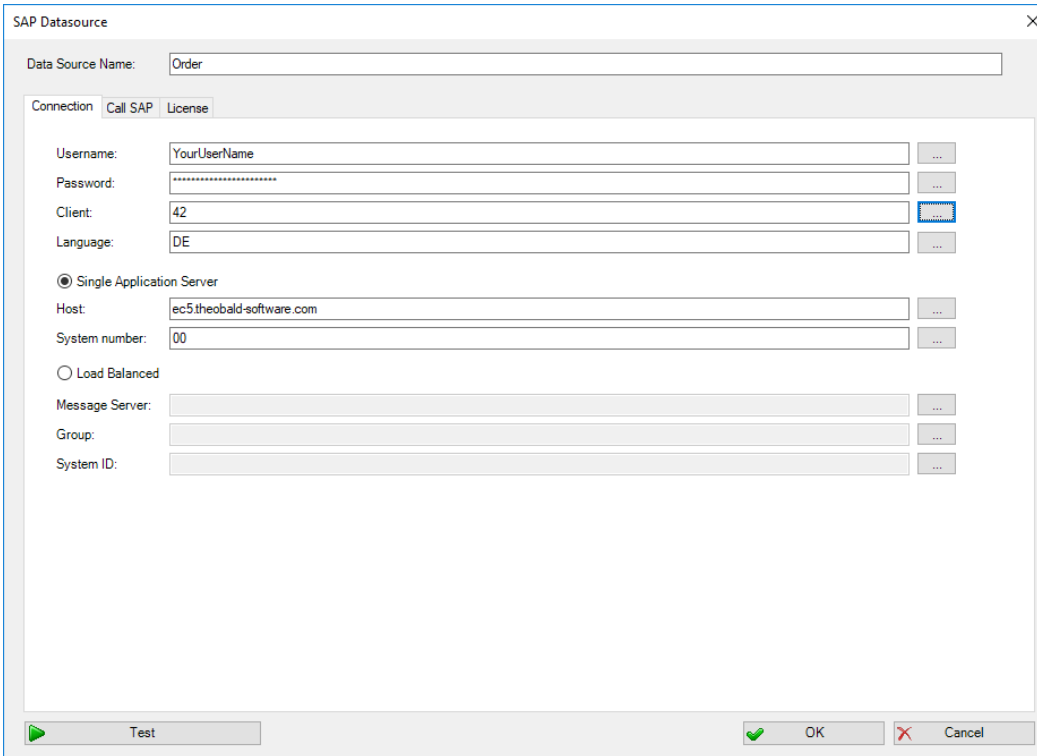
Don't forget to copy the file Library **Librfc32.dll** to your Server. This Library can be downloaded from the SAP Software center: [Software Center - SAP for Me](#). Search for and download the SAP KERNEL 32-BIT or SAP KERNEL 64-BIT components.

Also have a look at the dox42 Server Documentation: <https://www.dox42.com/Resources>.

5 Data integration with dox42SAP

5.1 Connection to SAP

Configure the connection to SAP in the register **"Connection"**. You can define data fields of another data source for every value. This way, you could transfer the configuration for example in an Excel or XML file:



The screenshot shows the 'SAP Datasource' configuration window. At the top, the 'Data Source Name' is set to 'Order'. Below this, there are three tabs: 'Connection', 'Call SAP', and 'License'. The 'Connection' tab is active. It contains several input fields: 'Username' (with 'YourUserName'), 'Password' (masked with asterisks), 'Client' (with '42'), and 'Language' (with 'DE'). Each field has a small '...' button to its right. Below these fields, there are two radio buttons: 'Single Application Server' (which is selected) and 'Load Balanced'. Under 'Single Application Server', there are fields for 'Host' (with 'ec5.theobald-software.com') and 'System number' (with '00'), each with a '...' button. Under 'Load Balanced', there are fields for 'Message Server', 'Group', and 'System ID', each with a '...' button. At the bottom of the dialog, there is a 'Test' button with a play icon, and 'OK' and 'Cancel' buttons with checkmark and X icons respectively.

With the dox42SAP Custom SAP Data Source you can:

- ✓ Read and filter SAP tables
- ✓ Read data from SAP BAPI/RFC modules
- ✓ Execute SAP BW Queries (since version 4.1)

5.2 Read SAP tables

SAP Datasource

Data Source Name: Order

Connection Call SAP License

Read: Table VBAK

Import Parameters/Structures Open SQL Where Clause

VBELN = '<%OrderNo%>'

Max Rows: Insert Data Field

Return: Table Convert Date/Time

SAP Column Name
VBELN
ERDAT
ERZET
ERNAM
KUNNR
AUGRU
...

Test OK Cancel

5.3 Call SAP BAPI/RFC modules

SAP Datasource

Data Source Name: SAP_flightList_Destination

Connection Call SAP License

Read: BAPI/RFC BAPI_FLIGHT_GETLIST

Import Parameters/Structures Open SQL Where Clause

Param Name	Value	Data Field
DESTINATION_FROM_AIRPORTID	<%From%>	<input type="text"/>
DESTINATION_TO_AIRPORTID	<%To%>	<input type="text"/>
*		

Return: Table FLIGHT_List Convert Date/Time

SAP Column Name
KUNNR
LAND1
NAME1
NAME2
ORT01
PSTLZ
REGIO
STRAS

Test OK Cancel

Define structure in your Input Parameters with:

Structurename.Parametername

5.4 Execute SAP BW Queries

SAP Datasource

Data Source Name: VARDEMO01

Connection Call SAP License

Read: BW/Query 0D_DECU/VARDEMO01

Variables Open SQL Where Clause

	Variable	Value	Data Field
▶	MAT04	<%Material%>	
*			

Return: Table Convert Date/Time

	SAP Column Name	Dimension/Measure
	0D_SOLD_TO	Dimension
	0D_CO_CODE	Dimension
	0D_MATERIAL	Dimension
	Cost	Measure
▶	Value	Measure
*		

Test OK Cancel

6 Support

Should you have any questions, please do not hesitate to contact support@dox42.com. We are happy to help you!

Good luck with dox42!

Your dox42 Team